



**COMPLETE SWEET  
CORN CANNING  
LINE:  
COOKER COOLERS**

Welcome to the cooker – cooler segment of our complete sweet corn processing line!

All equipment is installed or on site and can be inspected upon request. Please contact us at [info@equipmentbutler.com](mailto:info@equipmentbutler.com) to set up an appointment.



2 Shell 211x304







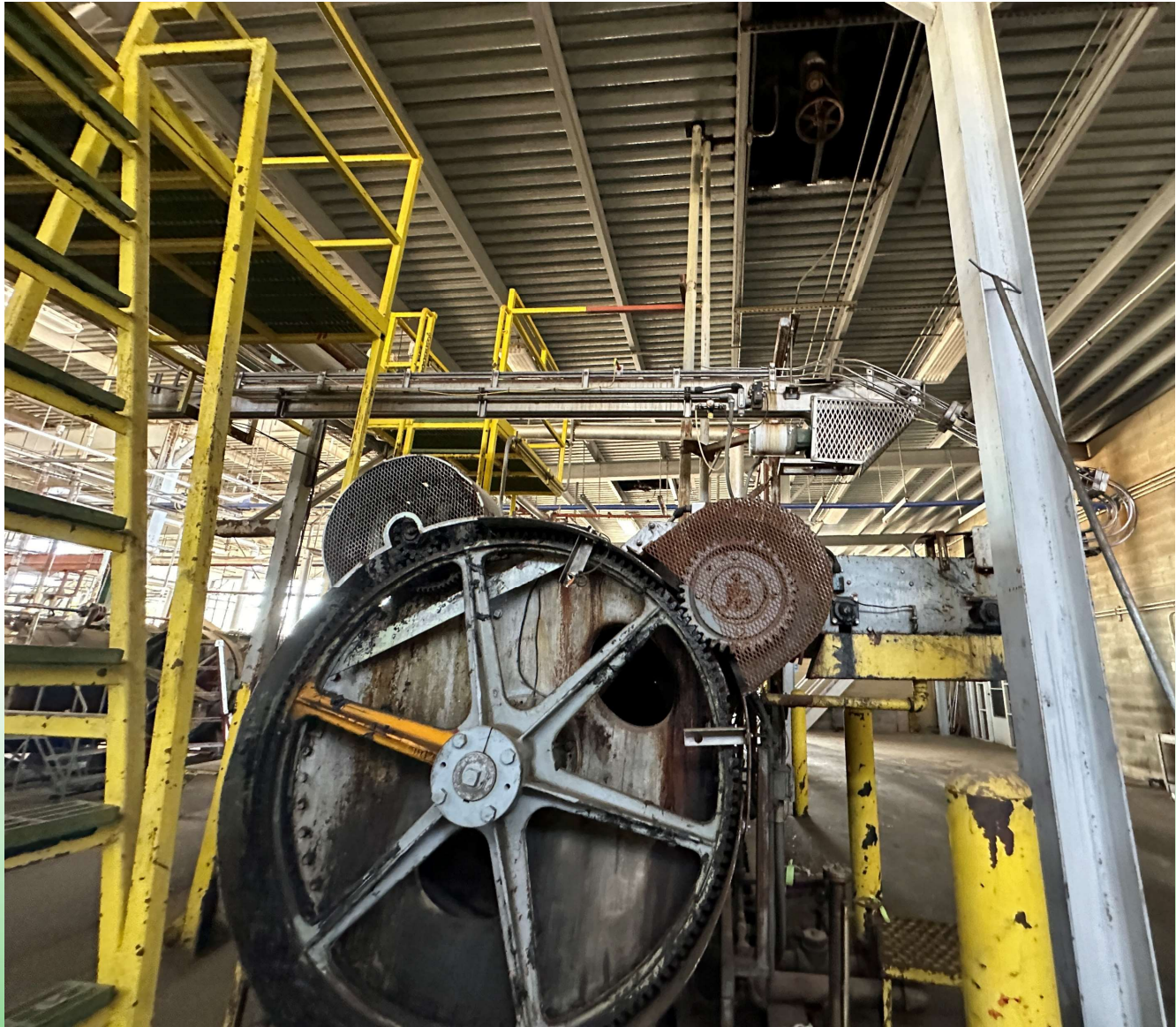












EQUIPMENT  
— BUTLER —



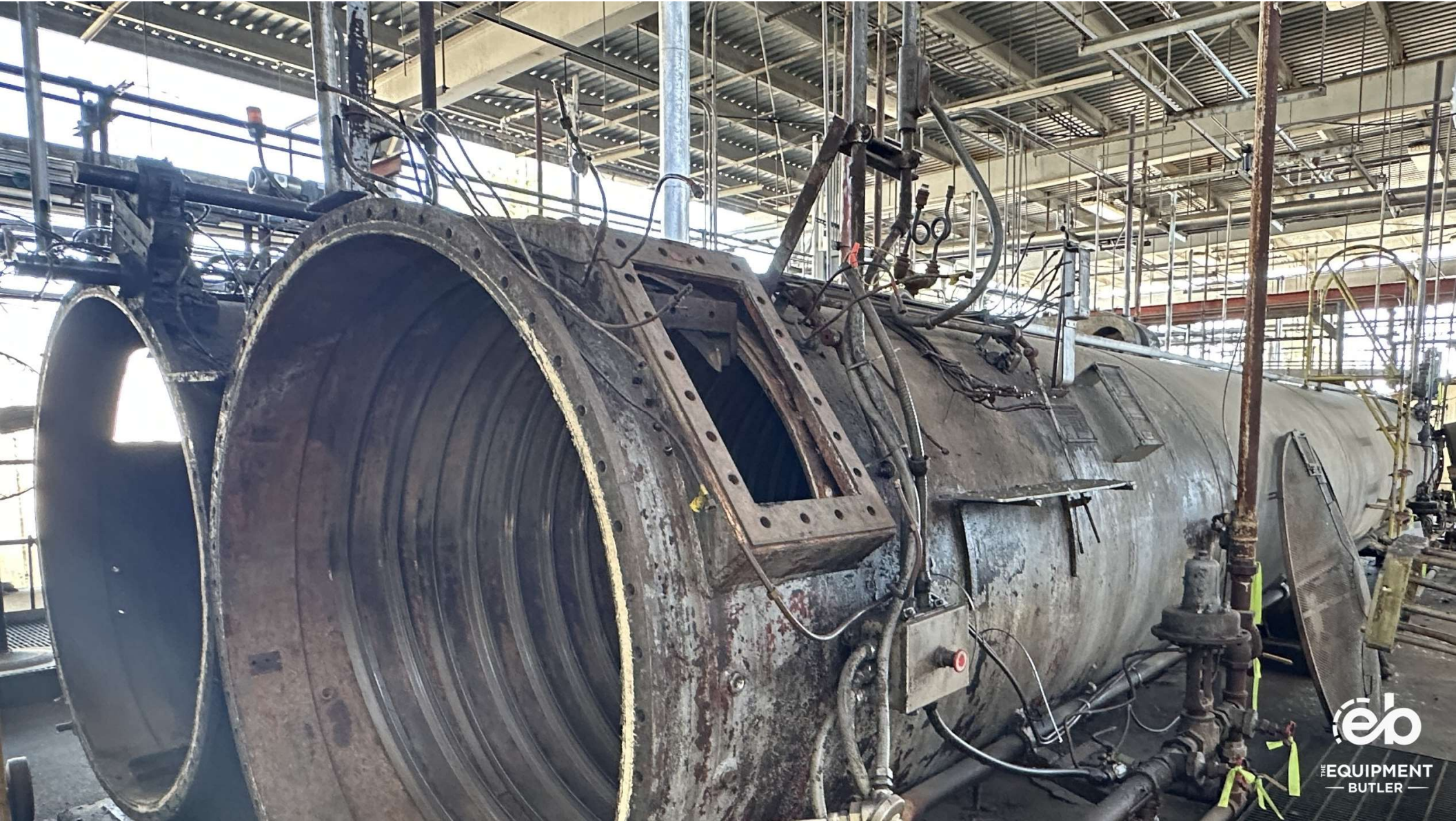
2 Shell 300x407











THE EQUIPMENT  
— BUTLER —





THE EQUIPMENT  
— BUTLER —

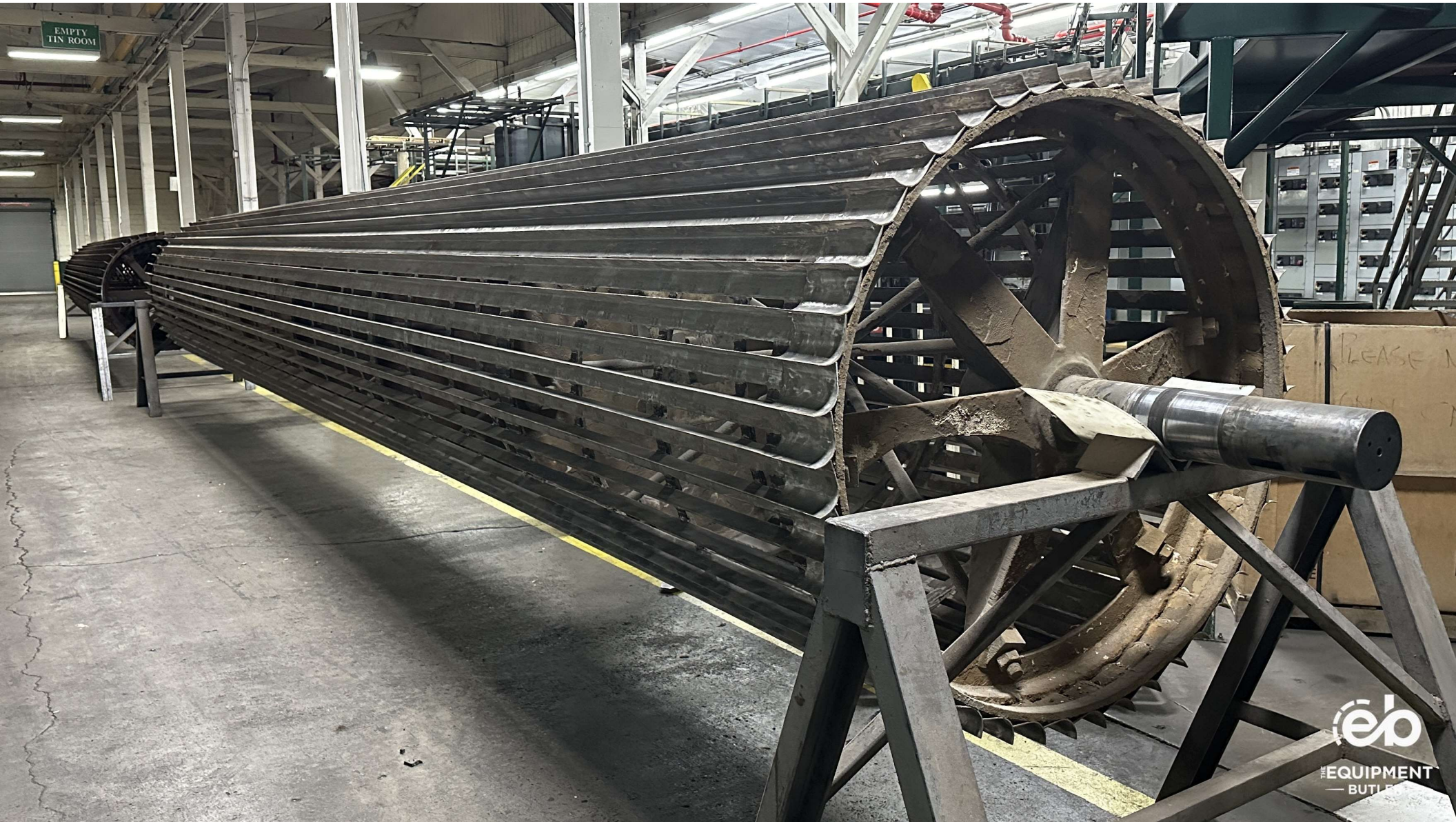












EQUIPMENT  
— BUTLER



2 Shell 300x407, cap 3901













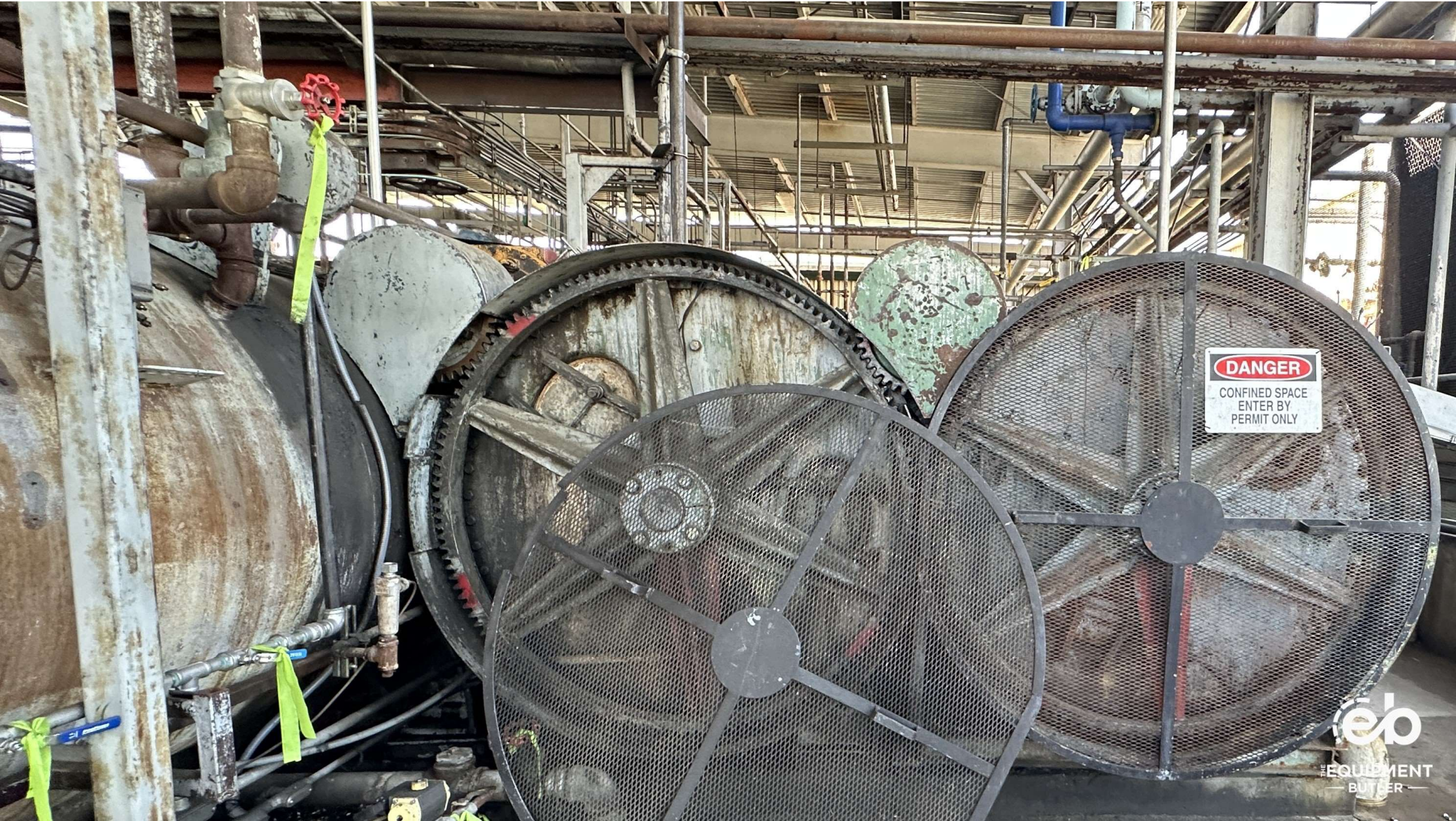
4 Shell 300x407, cap 3901











**DANGER**  
CONFINED SPACE  
ENTER BY  
PERMIT ONLY









THE EQUIPMENT  
— BUTLER —







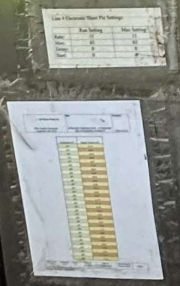
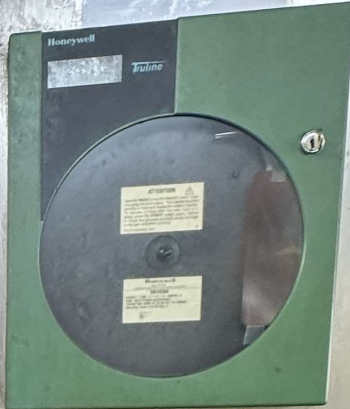


entry into vessel.  
**UNLESS** alarms are  
verified as working and  
cooker is at operational  
conditions for reel  
speed and temp.



**CAUTION**  
ONLY AUTHORIZED  
PERSONNEL PERMITTED  
TO OPERATE  
THIS MACHINE

**WARNING**  
0.22







**THE EQUIPMENT**  
— **BUTLER** —

## **CONTACT US FOR AN APPOINTMENT!**

We can't wait to show you this fantastic line! Reach out and let us show it off to you. And thank you!

Email: [info@equipmentbutler.com](mailto:info@equipmentbutler.com)

Call: (360) 558-7300